



# *AQF 900II* 900mm(36") x 1500mm(59") *Water Wash Flexographic Processor*

## *Main Features:*

- ~ **Environmentally friendly water wash system**
- ~ Automatic In-line processing
- ~ Chain Drive / Pin Bar Transportation
- ~ Orbital Brush Action
- ~ Pulsed hot air drying
- ~ Filter treatment for waste water
- ~ Digital VDU operator interface
- ~ Stainless steel construction
- ~ Easy to maintain
- ~ Unique modular assembly



## *New Plate Transport System:*

The new AQF 900 II is based on a chain drive / pin bar transportation system incorporating the basic principles of water wash technology; this allows the processing of plates of vastly different lengths. The plate is punched after main exposure and loaded onto the pins on the pin bar, which is automatically picked up by the chain drive system. The plate is then carried through into the processor and washed out by orbitally operating brushes, which is followed by a drying sequence. On completion of the cycle plates exit onto a flat delivery table and the pin bar stops at the end of the processor. Plates then require post-exposure and detack treatment following wash out and drying.

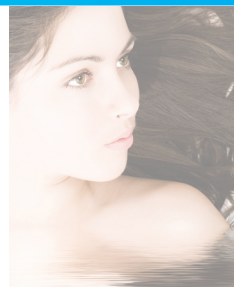
[www.dantex.com](http://www.dantex.com)

**DANTEX**  
Plates & more

YOUR PARTNER IN WATERWASH PHOTOPOLYMER PLATE TECHNOLOGY

# AquaFlex Digital & Analogue

## water wash flexographic plate making system



## Specifications

### Power:

380-415V / 32A / 50Hz  
3PH + N + PE Fused 32A/Phase (UK)

220V / 60Hz  
3PH + PE Fused 40A/Phase (US)

### Maximum plate size:

Dimensions: 900mm x 1500mm  
36" x 59"

### Unit dimensions:

3500mm x 1500mm x 1270mm (L x W x H)  
138" x 60" x 50"

### Net weight:

950 kg / 2095 lbs

### Operating weight:

1200 kg / 2646 lbs

The information in this document is based on our present knowledge and experience. Due to the multitude of factors influencing the processing application of our products it does not release the user from own testing and experimentation.

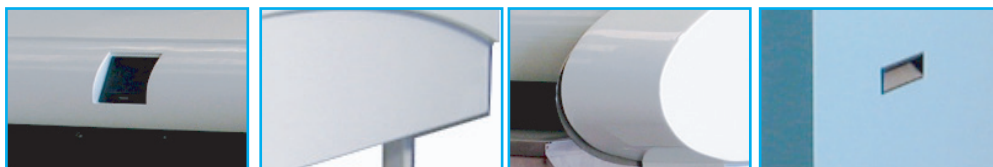
Nor does it imply any legally binding assurance concerning specific properties of the products or suitability for a particular application. The responsibility of observing any pertinent industrial property rights, laws and regulations rests with the user. Subject to technical change without notice.

AQF - 90011

## Excellent Resolution

## Superb printed results

## Environmentally Friendly Water Wash Processors



## High Quality – High Speed – High Tech

**DANTEX**  
Plates & more

Aquaflex® is a Registered Trademark Dantex Graphics Limited. Aquaflex equipment is manufactured in the United Kingdom by Dantex Graphics Limited.

YOUR PARTNER IN WATERWASH PHOTOPOLYMER PLATE TECHNOLOGY