

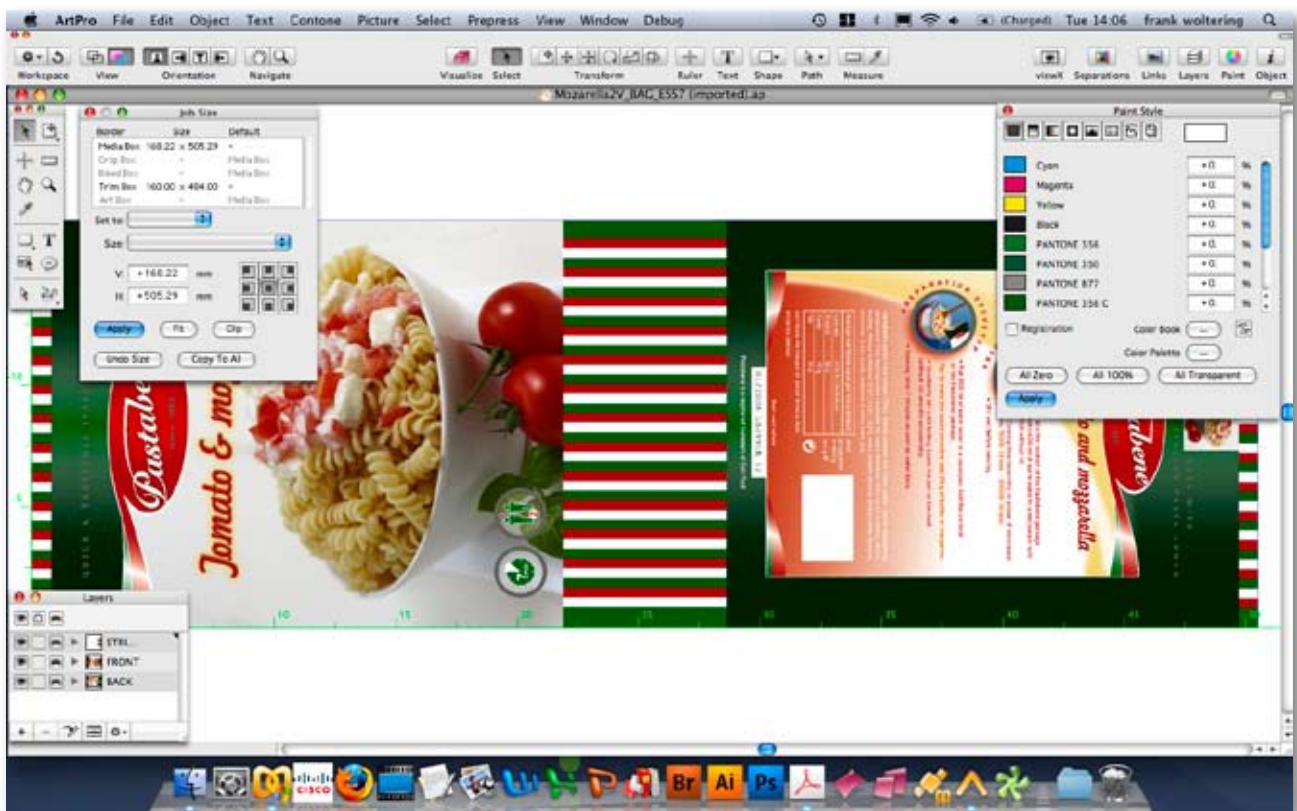
Packaging pre-production software on Apple Macintosh



ArtPro

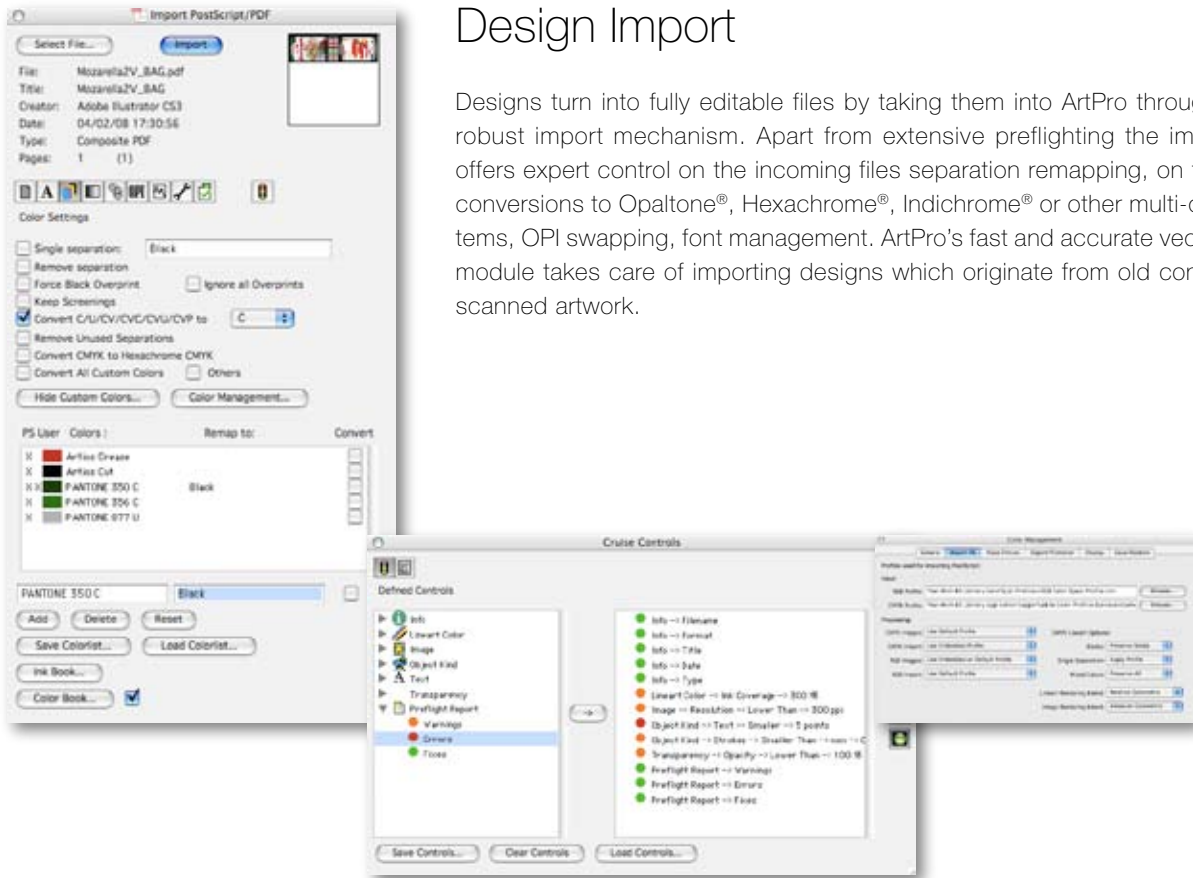
ArtPro is EskoArtwork's most popular editor for the pre-production of labels and packaging. This workstation software includes many dedicated functions and tools to prepare the graphics for a wide array of packaging production (litho printing, flexo printing, gravure, silk screen, digital printing...).

With more than 12.000 licenses sold worldwide, ArtPro has become the standard in the packaging prepress industry. With ArtPro, the prepress professionals can turn designs into print-ready files instantly, resulting in a productivity increase that remains unbeaten by any competitor.



Design Import

Designs turn into fully editable files by taking them into ArtPro through a very robust import mechanism. Apart from extensive preflighting the import filter offers expert control on the incoming files separation remapping, on the fly ink conversions to Opaltone®, Hexachrome®, Indichrome® or other multi-color systems, OPI swapping, font management. ArtPro's fast and accurate vectorization module takes care of importing designs which originate from old conventional scanned artwork.



Editing

Once the design has been brought into an ArtPro environment, the file is unveiled for the operator. All objects – line art, live text or images – can be checked for shape, color, screening, transparency, blend mode and its relation in the file structure (compounds groups and layers). And all these parameters can easily be changed.

ArtPro allows text changes in its built-in text environment, even text that was split up due to the PostScript or PDF language can be reflowed.

All kinds of vignettes can be defined and images can be placed and changed. Many image formats are supported: TIFF, EPS, DCS, PDF. All file elements, even images, can use special inks and are not restricted to 4 colors or CMYK as ArtPro's editing is completely built around deviceN (N separations).

ArtPro creates many industry standard bar codes and incorporates all necessary checks for optical readability.



PowerTrapper module

PowerTrapper is based on the new 4Stage technology. This technology handles transparencies and blend modes of today's modern design files flawlessly. This trapping module is completely compliant with packaging needs and knows how to handle special color pairs, opaque inks, varnishes, white plates, rich black trapping, etc.

ArtLink

ArtLink automatically renders different flavors or versions of one file with hot links built into the ArtPro production file. These connect the content and the parameters of different objects to records in a database.



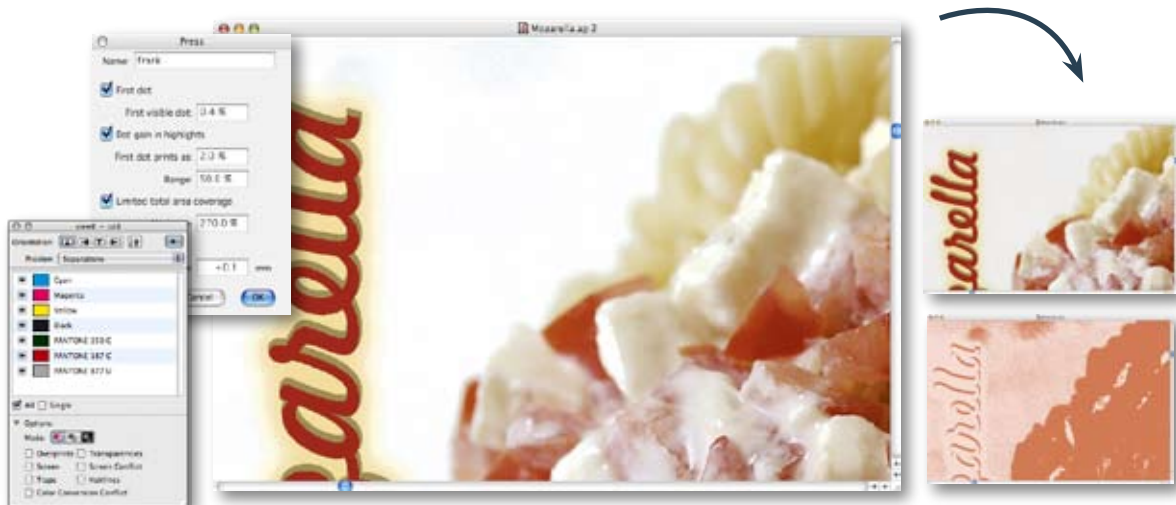
viewX

viewX is ArtPro's real-time pre-visualization of how the design will print. It allows verifying the printed result before expensive proofs or plates are made.

A set of smart highlight tools assist the operator to focus on critical areas and apply the necessary corrections. Next to Total Area Coverage or lost highlights critical object properties such as opacity, screening conflicts, hairlines, traps and scum dots can be displayed.



viewX has all required view filters to help prepress professionals reduce turn around time and eliminate errors. The unique simulation of registration errors enables users to analyze efficiently whether the trapping will be sufficient.



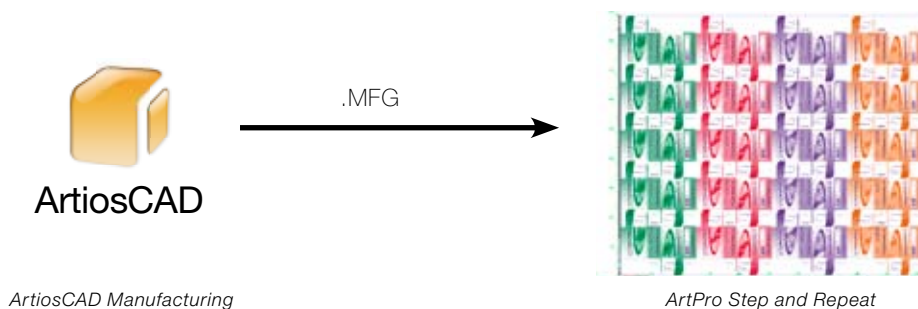
PowerWarp module

PowerWarp allows distortion of a part of or a complete graphic image to compensate for the deformation the printed product will undergo when it adopts its final 3-dimensional shape. The distortions applied to the graphics are based on grids or reference lines created with the same module. These distortions are dependent on the type of warping necessary: cups, cans, ceramics, blisters, shrink wraps and sleeves. PowerWarp grids can be rendered into 3D animations to evaluate the distortion before real print.



PowerStepper module

PowerStepper utilizes the layout parameters of a die manufacturing file to generate the matching Step & Repeat asset for print production. This integration eliminates human errors. Station number routines and masking tools significantly improve the prepress efficiency.



CAD-Graphics integration

Structural and graphic professionals need to communicate without conversion barriers. ArtPro imports the industry's most popular native CAD file formats: ArtiosCAD and common formats such as CFF2 and DDES.

Enrich structural design

Adding cutouts following graphic elements is an appealing effect in packaging design. The CAD export functionality of ArtPro lets you add cut and creases to existing ArtiosCAD designs for a perfect match between print and die!



Virtual mock-up

ArtPro incorporates EskoArtwork's new structural design software for flexible packaging shapes. Import the native file format of the revolutionary Studio Toolkit For Flexibles. Close integration with EskoArtwork Visualizer allows ultra realistic visualization instantly.



Highlights

CAD-Graphics integration



ArtiosCAD

ArtPro incorporates all major structural design file formats: **ArtiosCAD**, CFF2 and DDES. Integration of EskoArtwork's revolutionary flexible structure assets.

ArtPro supports the native ArtiosCAD die manufacturing data. Importing MFG files eliminates any cut-to-print error and reduces the turnaround time.



Equinox

Equinox is EskoArtwork's unique color technology for expanded gamut printing. Take productivity to the next level by reducing production costs, eliminating press downtime and ink changes. Expanded gamut printing makes it possible to reproduce a spot color while maintaining the visual brand identity.

ArtPro and Visualizer



Visualizer

The direct output to Visualizer moves quality control on a new level where the approval can be done on an ultra realistic model of the packaging. Miscommunication about elements that simulate varnish, die, embossing, white or transparent surfaces are history! Together with the linked structural data ARD or BAG, you can now export to EskoArtwork Visualizer – quick and easy.

Workflow integration



FlexRip

ArtPro supports seamless data transfer to EskoArtWork's **FlexRip**, **BackStage** and **Nexus**.



BackStage



Nexus

Benefits

- High productivity
- Packaging dedicated tools and system architecture
- Real deviceN color space (up to 64 separations)
- High internal accuracy with ultra deep zoom
- Step and Repeat (PowerLayout), trapping, print and plate preview in real-time
- Full editability of PostScript and PDF
- Standard exchangeability format in packaging
- Easy to integrate
- Easy to learn
- Open approach for output