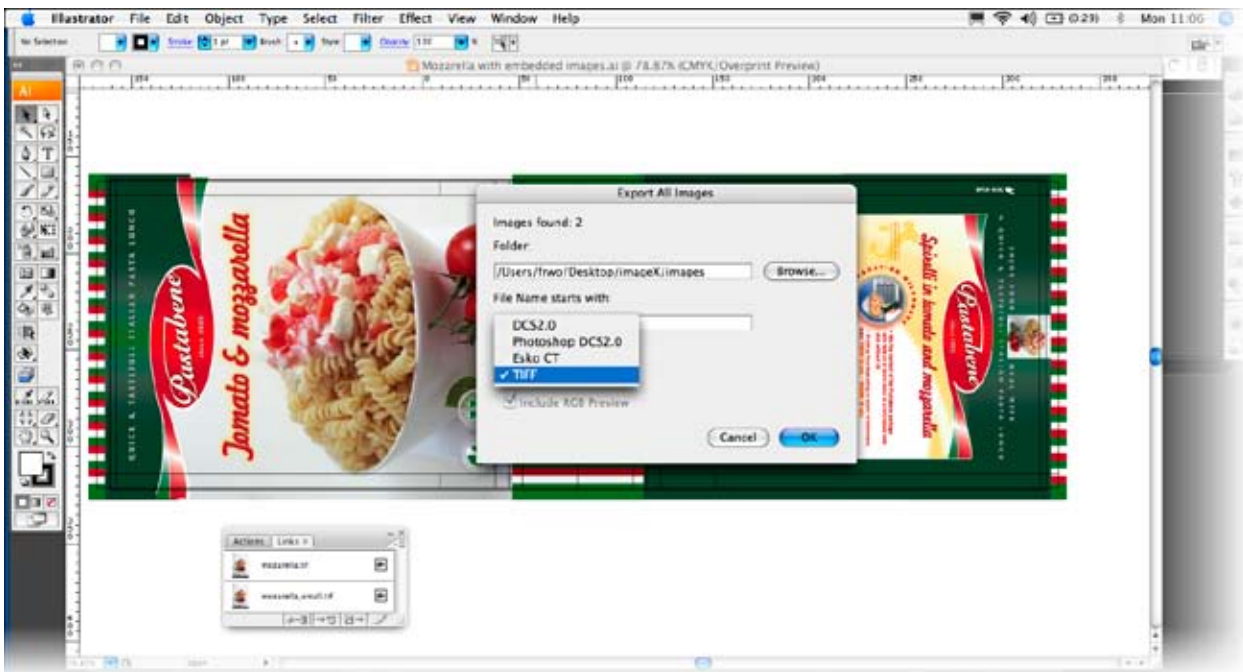




DeskPack

Translate embedded images to separate, externally linked images

Adobe® Illustrator® files can be created and transferred with embedded images. After receiving such files, image editing is not possible, because the image is not available as separate components. The imageX plug-in allows the operator to select such images, writing them to disk with an automatic feature that re-link them into the Adobe® Illustrator® file. Thus, images are available separately and can be edited with, for example, Adobe® Photoshop®.



Embedded images can be selected, written to disk, and automatically transformed from embedded images to linked images.

Supported input formats

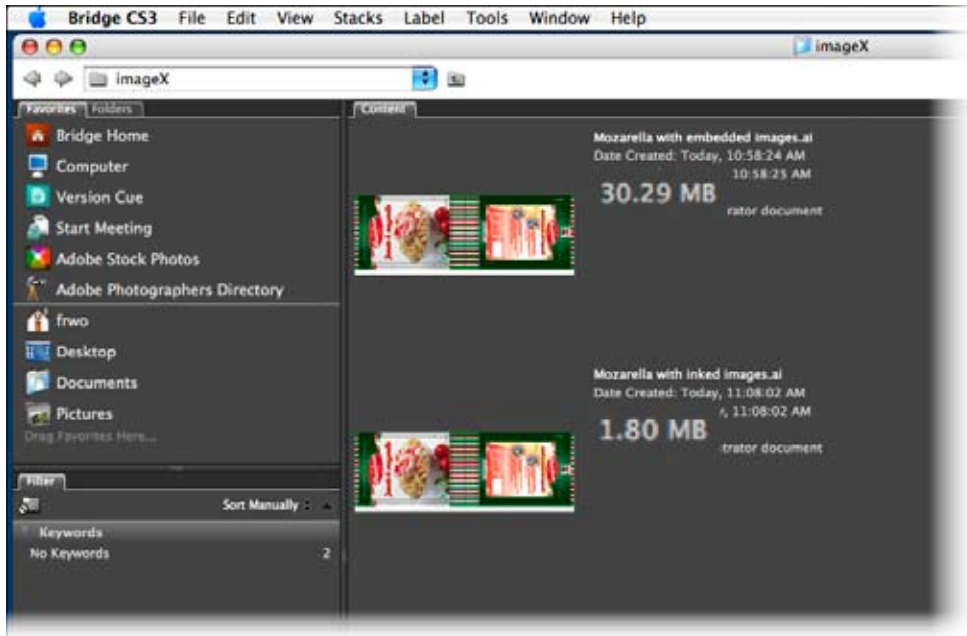
imageX supports the following embedded image modes:

- Monochrome images
- Bitmap images
- Composite CMYK
- Pre-separated spot color images. imageX will export these as composite multi-channel spot color images
- Adobe Illustrator

Supported output formats

Depending on the input format, imageX can export to the following output file formats:

- DCS2.0, Photoshop DCS2.0, Esko CT or Tiff.



Benefits

- Make embedded images data accessible for manipulation e.g. with Adobe® Photoshop®
- Share and control equal image data between documents
- Reduce turnaround time by reducing the file sizes easy-to-use



DeskPack

DeskPack is an integrated part of EskoArtwork's complete packaging solution, the most advanced workflow environment for the packaging industry. DeskPack turns Adobe® Illustrator® and Adobe® Photoshop® into full-fledged design and prepress production tools.