

# Nesting for digital Sign & Display

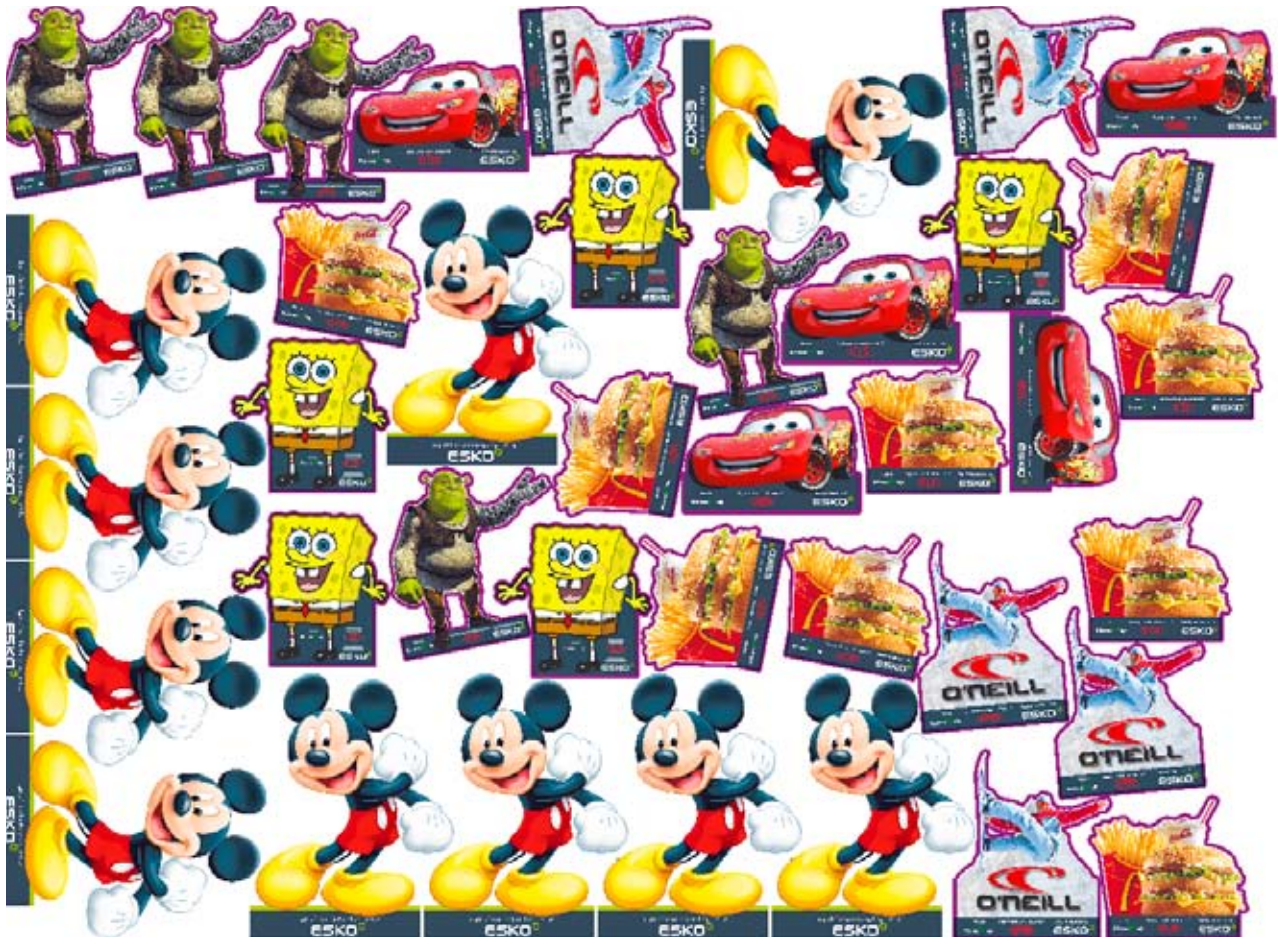
## SignUp & SignUp Auto

*Automated converting was never so easy. The SignUp family offers a variety of ways to save time and material for the Sign & Display market.*

**SignUp** is an interactive layout application for the digital Sign & Display market. SignUp reduces the preparation time for every job, it optimizes press time and substrate usage.

**SignUp Auto** automates nesting and tiling in a unique way through metadata-driven workflows.

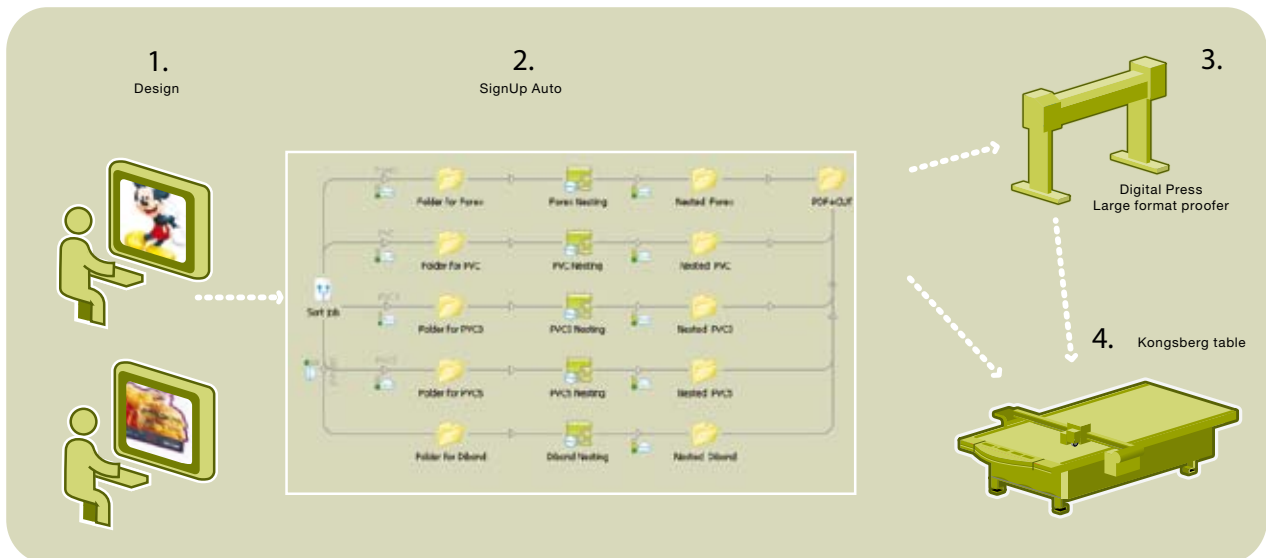
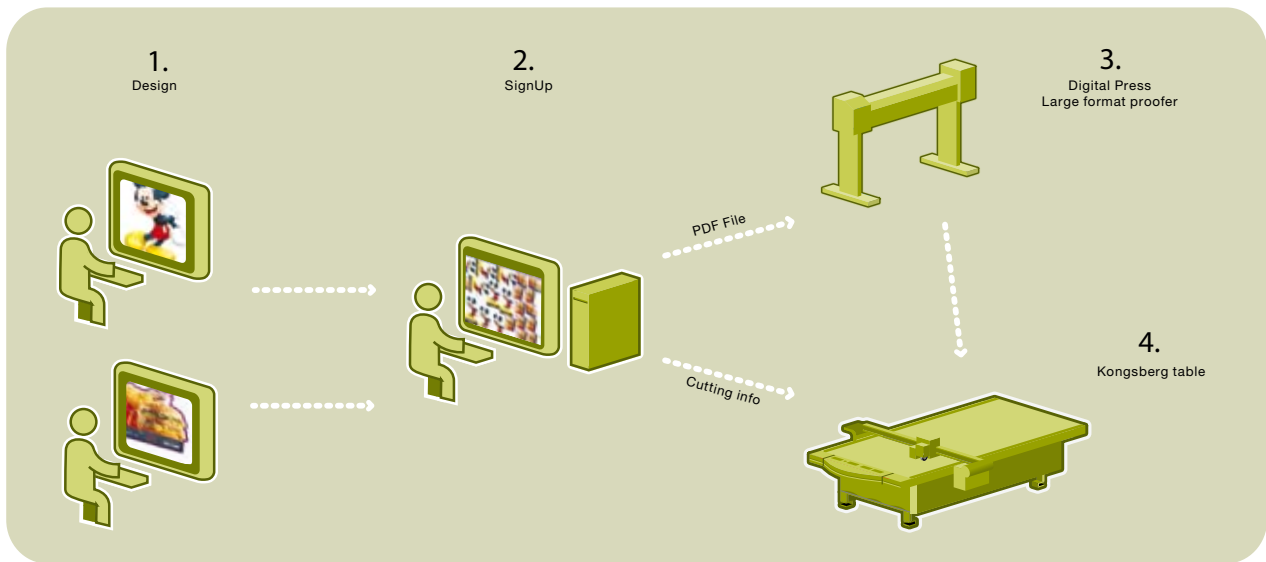
SignUp Auto provides sign and display companies with a way to use their raw substrates more efficiently. It also helps with eliminating costly operator time in Adobe® Illustrator® or other DTP packages. And finally, it provides the mechanism to accept files from a digital storefront.



# How does it work?

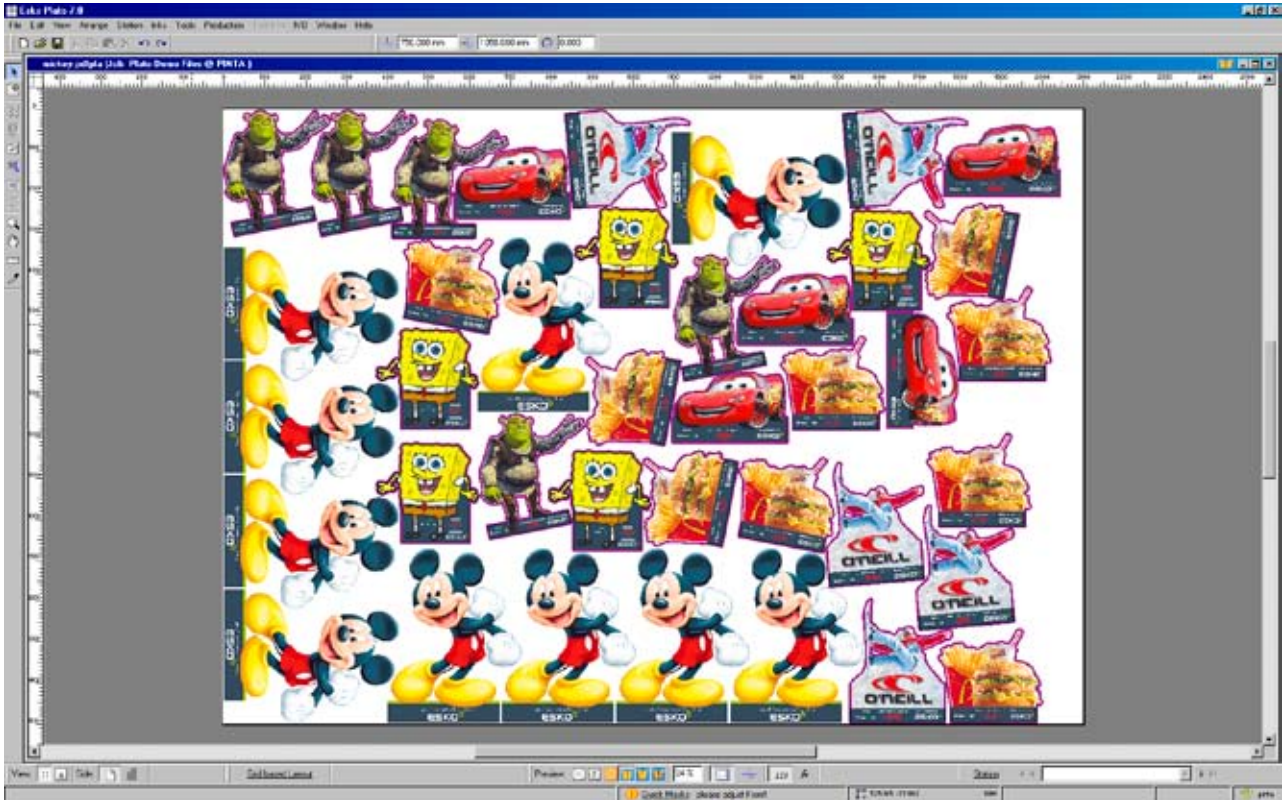
1. Jobs come in from a variety of desktop design and publishing packages.
2. SignUp nests them (interactively or via SignUp Auto).
3. SignUp sends a PDF to the press.
4. The cutting information is sent to the finishing device simultaneously.

SignUp can also be used purely as a nesting application to cut laminating material for post-print lamination purposes.



# Reduce waste, maximize your margins

SignUp nests pieces based on their true form and ordered quantities. It takes both regular and irregular shapes into account. This minimizes the number of printed sheets per job and optimizes the use of substrates as well as press time.



## Reduce errors

Reduce operator errors with unique features such as synchronized links between the front and back sides of displays, guaranteeing a perfect match. Precise cuts are assured with automatic placement of registration *i*-cut marks and barcode-driven automation on *i*-cut enabled finishing devices.

SignUp is extremely flexible. It allows for last-minute edits to cutting paths. It is able to create a die shape automatically. This provides smoother and straighter cutting shapes for aesthetic or cutting speed purposes.

## Save time

Because SignUp reduces the number of printed sheets per job, press time is optimized.

The same can be said of the operator's time. The preparation of the cutting data takes a fraction of the time it took before. And, because most of it is automated the error rate is reduced significantly. Automatic finishing becomes the standard with finishing marks such as barcodes.

SignUp offers flexibility: die shapes are created automatically and cutting paths can be changed in the last minute.

## Tiling

SignUp is perfect for oversized jobs and billboards. It provides interactive adjusting for specialty purposes. Irregular tiles can be defined for special applications, such as exhibition booth corners, wall coverings, store displays...

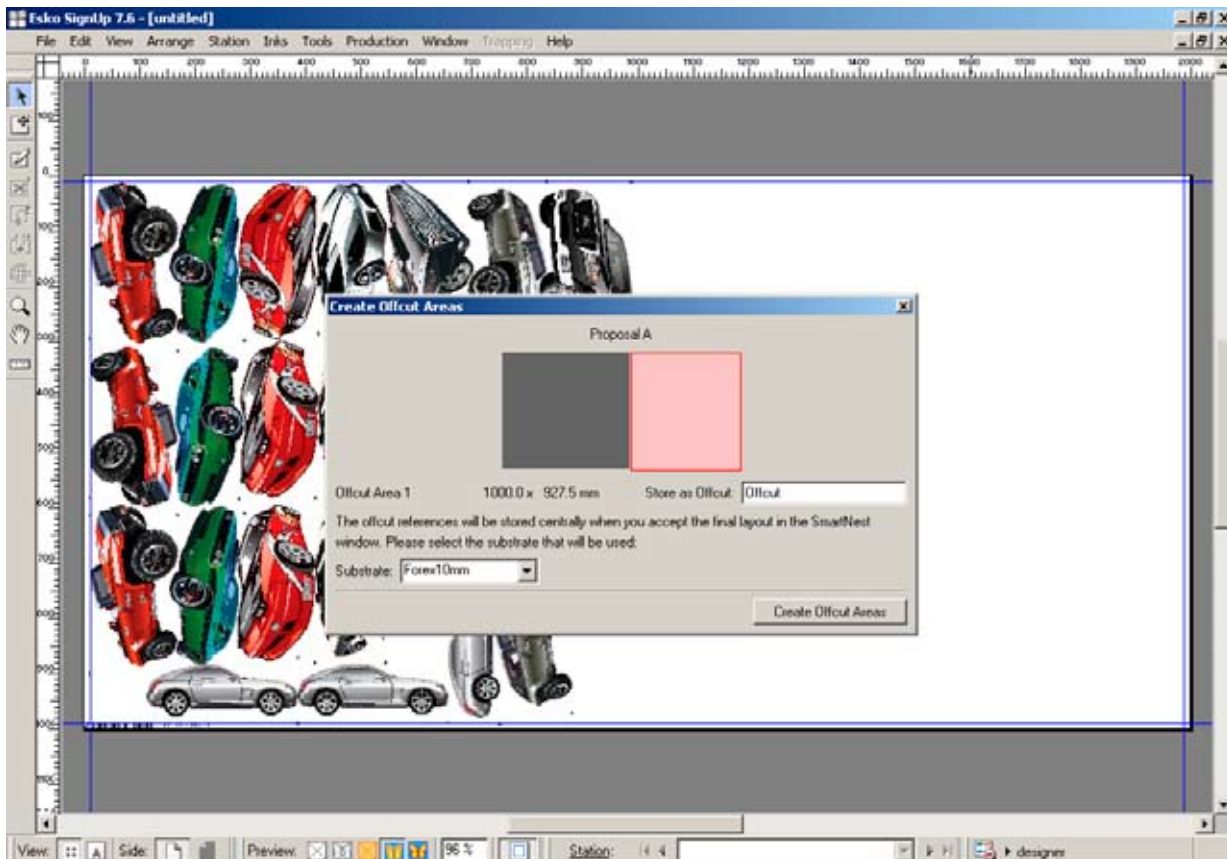
## Jigsaw

Prepare a jigsaw puzzle for printing and milling with just one click. SignUp offers automatic mask generation for every piece of the jigsaw. SignUp also compensates for milling on the contours, so that the jigsaw pieces fit perfectly when they are taken off a cutting table.



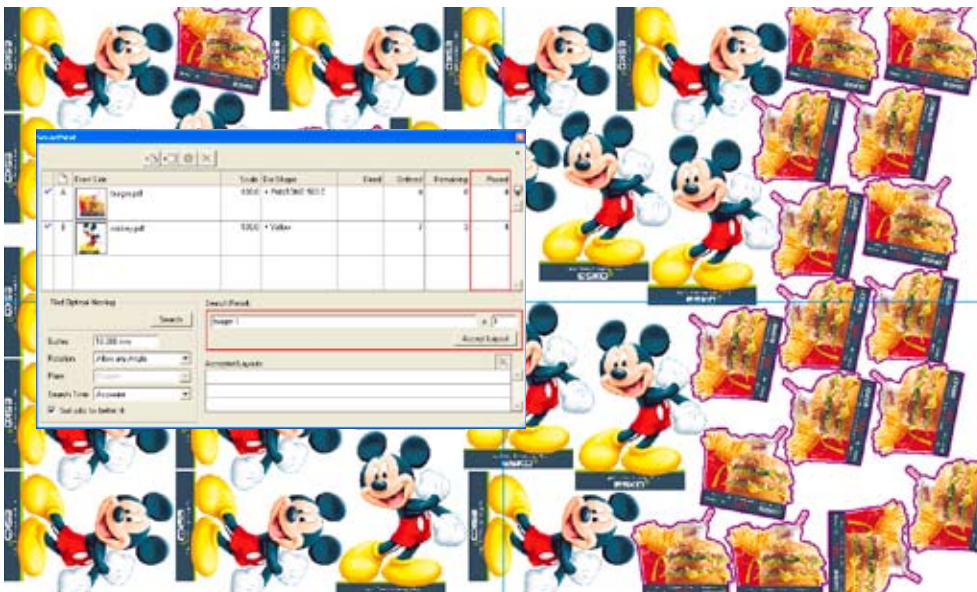
## Offcut manager

At times, rushed deadlines make it impossible for a print shop to wait to fill a full piece of material cost-effectively. When this happens, the Offcut manager will organize the nesting of available images on the substrate, efficiently leaving a blank area of the board so that it can be re-used. For the printer, this dramatically reduces waste even when meeting very tight deadlines.



# Features

- True profile nesting. The nesting is based on the actual cutting contours, so the shape's irregularity is no issue.
- Cutting contours are generated automatically.
- Nesting is based on the ordered quantities and on job priorities.
- The cutting shapes can be edited.
- The back sides of double sided displays are generated automatically.
- Front and back side of double sided displays are synched automatically.
- Oversized jobs can be tiled. These tiles can be edited interactively.
- There is automatic contour masking and auto bleed. This is an optional feature for irregular shaped multi tile wall displays and special applications such as jigsaws that require milling. This option saves a lot of the operator's time on the prepress side.
- SignUp drives *i*-cut enabled finishing devices (like the EskoArtwork Kongsberg tables) and HPGL devices.
- Automatic bleed to images. By automatically creating a bleed to images with an appropriate margin of error, SignUp assures that any cut will be made to the edge of the image. More importantly, SignUp eliminates the hours it would take an operator to manually build these bleeds in Adobe® Photoshop®.
- Automatic White underprint generation. SignUp will automatically prepare a file for a white underprint. This is particularly common with plexi displays. This way, you don't have to go through the time-consuming prepress tasks in Adobe® Illustrator® and Adobe® Photoshop®.
- Multi page support. With SignUp Auto, settings can be established for two sided displays. Odd pages will open automatically as reverse sides. Even pages open as front sides.
- Support for displays. SignUp accepts structural data from popular CAD software, like ArtiosCAD. Furthermore, SignUp is able to create SmartMark dynamic job marks, such as eyelet marks for banners.



# Benefits

Both SignUp and SignUp Auto

- reduce material waste
- reduce substrate usage
- optimize press times
- are rip-independent: you are free to work with a variety of digital printing and proofing devices, both sheet and roll fed

## Comparison SignUp and SignUp Auto

	SignUp	SignUp Auto
Nesting based on ordered quantities and job priorities	✓	
Nesting based on ordered quantities via metadata in the workflow		✓
Nesting based on cutting contour	✓	✓
Editing of one-up + automatic cutting contour generation	✓	
Automatic synching between front and back side of double sided displays	✓	
Tiling for oversized jobs – interactive editing of tiles	✓	
Automatic tiling for oversized jobs		✓
Tiling for irregular tile sizes (with editing tools)	✓	
<i>i</i> -cut support	✓	✓
Offcut manager	✓	
Metadata driven workflow		✓
Drive applications (Adobe® CS®, color management, proofing...)		✓